



Racine County
Public Health

2024 ANNUAL REPORT

RACINE COUNTY PUBLIC HEALTH DIVISION
9531 RAYNE RD, STE V
STURTEVANT, WI 53177

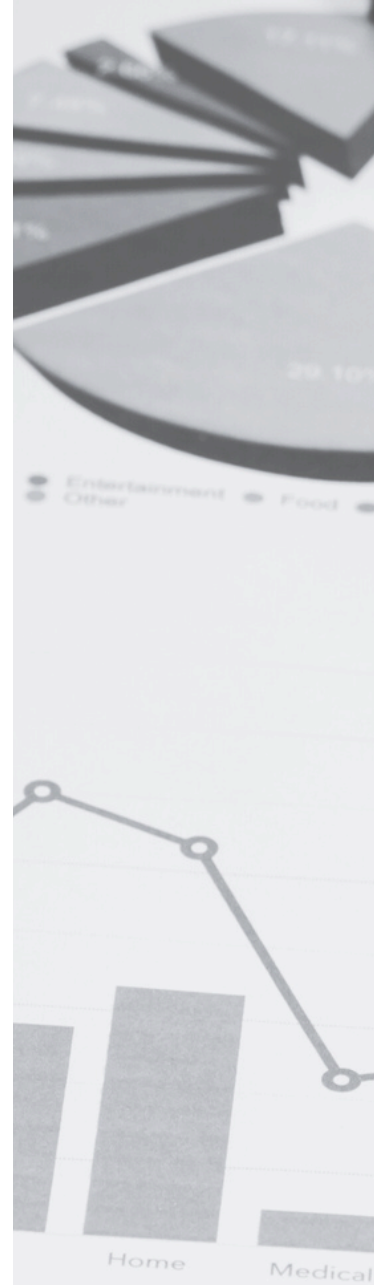


TABLE OF CONTENTS

Message from the Health Officer2

Health Department Staff and Board of Health3

Health Department Mission, Vision, Values.....4

General Health Department.....5

Community Health.....7

Environmental Health.....14

Home Visiting.....18

Emergency Preparedness and Budget Summary19



MESSAGE FROM THE HEALTH OFFICER

In 2024, public health achieved remarkable milestones that truly reflect the power of collective effort and innovation. We witnessed a significant reduction in suspected opioid overdoses due to the immense outreach and harm reduction programs available across the county. We reached more families than ever through our two distinct home visiting programs - offering support and guidance during crucial developmental years. We also made strides in improving the health and safety of visitors to Racine County through our inspections and licensing of short-term rentals (such as AirBNB or VRBO). Looking forward, RCPH is dedicated to being a trusted health leader and relevant force in the community.

Throughout the report, you will find references to the **Foundational Public Health Services (FPHS)** framework. This framework is the cornerstone of a healthy, thriving community, and understanding their importance is key to fostering well-being for everyone. These services encompass a range of essential activities and programs that are indispensable in creating a healthier, more equitable society.

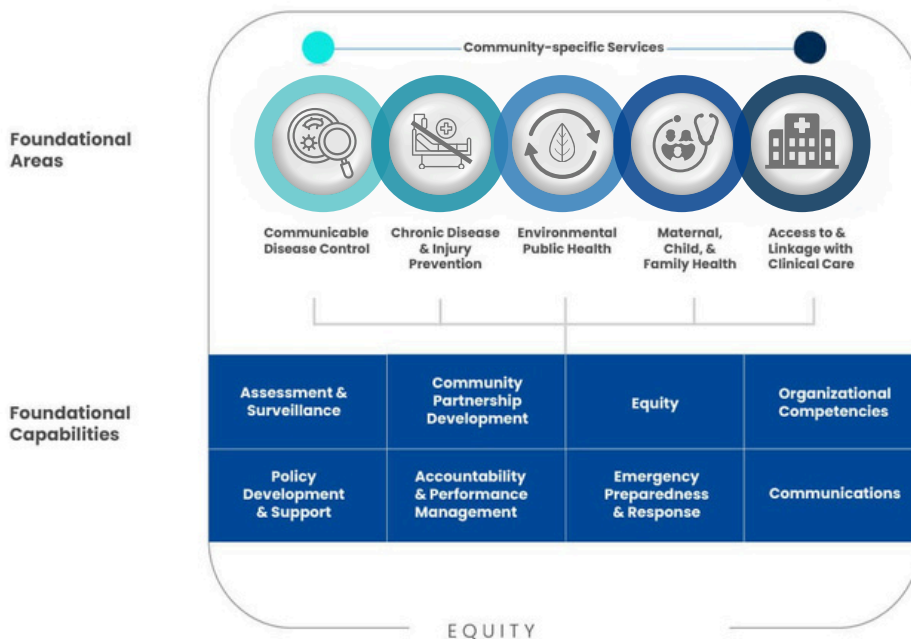
- **Foundational Areas** represent the basic level of service that should be accessible in all communities.
- **Foundational Capabilities** are the necessary skills and abilities required to support fundamental public health measures, programs, and activities crucial for community health, well-being, and achieving fair outcomes.

We would like to take a moment to express our sincere appreciation for our outstanding partners, residents, and staff! Your unwavering dedication to building a healthier community in Racine County is truly inspiring. Your support and teamwork light the way for our efforts, and we couldn't do it without you. Here's to another fantastic year ahead, filled with exciting milestones and meaningful progress in public health.

JEFFREY LANGLIEB

HEALTH OFFICER

Foundational Public Health Services



February 2022

HEALTH DEPARTMENT STAFF

ADMINISTRATION & FINANCE

- Jeff Langlieb, Health Officer
- Keith Hendricks, EH Health Manager/Deputy Health Officer
- Ashlee Franzen, Community Health Manager
- Jennifer Jozwiak, Public Health Fiscal Analyst

ENVIRONMENTAL HEALTH (EH)

- Chuck Dykstra, EH Supervisor
- Jennifer Loizzo, EH Registered Sanitarian
- Kevin Plachinski, EH Registered Sanitarian
- Lindsay Visona, EH Sanitarian
- Angel True-McGinnis, Public Health Specialist (EH)

COMMUNITY HEALTH/HOME VISITING

- Kate Dickinson, Community Health Supervisor
- Kari Villalpando, Public Health HV Supervisor
- Erin Donaldson, Public Health HV Supervisor
- Sai Moua, Public Health Nurse
- Yesenia Arjon, PH Educator Home Visitor
- Claire Burns, PH Educator Home Visitor
- Dolores Hernandez, PH Educator Home Visitor
- Linda Garza, PH Nurse Home Visitor
- Kelley Marshman, PH Nurse Home Visitor
- Jack Ray, PH Educator Home Visitor
- Brittany Gunn, PH Nurse Home Visitor
- Wendi Huffman, PH Nurse Home Visitor
- Fred McCann, Disease Intervention Specialist
- Maia Diedrich, Disease Intervention Specialist

PUBLIC HEALTH STRATEGY & PREPAREDNESS

- Amanda Busack, PH Strategy/Comms Supervisor
- Renee Foy, Public Health Strategist
- Joella Murray, Public Health Strategist
- Darrin Ferguson, Public Health Specialist

EPIDEMIOLOGY

- Pa Chang, Epidemiologist
- Silvano Garcia, Epidemiologist

PUBLIC HEALTH CLERKS

- Amanda Davis, Public Health Clerk
- Beth Zivilik, Public Health Clerk

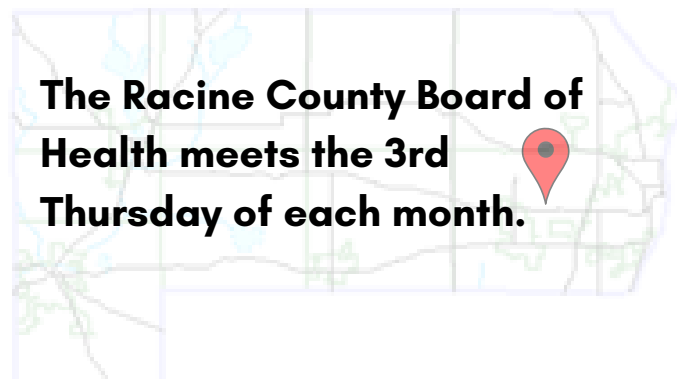
MEDICAL EXAMINER'S OFFICE

- Kristan Binninger, Medical Examiner
- Madeline Baumeister, Chief Deputy Medical Examiner
- Ana Longoria, Deputy Medical Examiner
- Andrew Beverly, Deputy Medical Examiner
- Kathryn Farrell, Deputy Medical Examiner
- Krystal Woda, Deputy Medical Examiner
- Leann Cornell, Deputy Medical Examiner
- Mandi Kampa, Deputy Medical Examiner
- Mark Sorensen, Deputy Medical Examiner
- Matthew Landherr, Deputy Medical Examiner
- Michael Gabbey, Deputy Medical Examiner
- Todd Thorne, Deputy Medical Examiner
- Amber Teiglan, Deputy Medical Examiner Transporter
- Jasa Miller, Deputy Medical Examiner Transporter
- Joanne Moore, Deputy Medical Examiner Transporter
- Melvin Robinson, Deputy Medical Examiner Transporter
- Terrance Banks, Deputy Medical Examiner Transporter
- Thomas Marzette, Deputy Medical Examiner Transporter

BOARD OF HEALTH

BOARD MEMBERS

- Vikkie Prochaska, RN
- Mark DeCheck, MD
- Susan Stroupe, RN
- John Monsen
- Sherry Gruhn
- Don Trottier
- Tom Kramer
- Scott Maier
- Alison Sergio



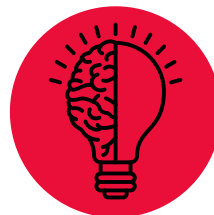
Mission

Public Health
Prevent. Promote. Protect.

Vision

A trusted health leader and
relevant force in the community.

Values



Innovation

Striving to find new ways to address current and future public health needs.



Leadership

Inspiring change to create healthy communities.



Advocacy

Creating awareness and support to improve public health outcomes.



Balance

Meeting diverse needs with strategic and ethical approaches.



Collaboration

Fostering trust and reciprocal relationships to efficiently address public health needs.



Dedication

Advancing health and wellness through relentless commitment.



Community Health Improvement Plan

In 2024, RCPH implemented the new CHIP by convening workgroups specific to each priority area - mental health, poverty, and preventable illness/injury.

Health Communication and Public Outreach

RCPH provides community education using novel and existing technologies with a focus on regular messaging. In 2024, RCPH shared

- 479 Facebook posts
- 410 Instagram posts
- 3 public awareness campaigns

Strategic Plan

In 2024, RCPH finalized, approved, and implemented the new strategic plan.

Other Collaboratives and Coalitions

RCPH addresses many community health needs through participation in community collaboratives and coalitions. Public health is a partner at the table to support and contribute to the work of other local agencies in provision of needed programs and services.

- SE WI Association of Local Health Depts & Boards (WALHDAB)
- Healthcare Emergency Readiness Coalition
- Environmental Health WALHDAB
- Wisconsin Public Health Association
- Advocate Aurora Steering Council Burlington/Walworth Market
- Advocate Aurora Healthcare Steering Council Racine/Kenosha Market
- Racine County Home Visiting Stakeholders
- Family Preservation West
- SE Wisconsin Environmental Health Task Force
-

RCPH provides leadership to drive the development of public health plans and policies that are consistent throughout the state but that address local needs.



Public Health Policies and Laws

RCPH regularly develops and updates policies and procedures for internal use as well as develops, promotes, and educates elected officials regarding local and state policies and laws.

State and National Public Health Accreditation

In 2024 RCPH completed the PHAB Year 4 report and prepared for reaccreditation.



Workforce Development Plan & Qualified Health Professionals



Performance Management & Quality Improvement Plans

In 2024, RCPH continued to refine its PM/QI processes. The Emergency Preparedness team implemented a new tabletop exercise along with evaluations to measure confidence level with ICS structure.



Communicable Disease Control

40%

Increase in Influenza Hospitalizations from 2023 to 2024

85%

Increase in RCPH vaccine preventable disease cases from 2023 to 2024

5%

Increase in chlamydia cases from 2023 to 2024

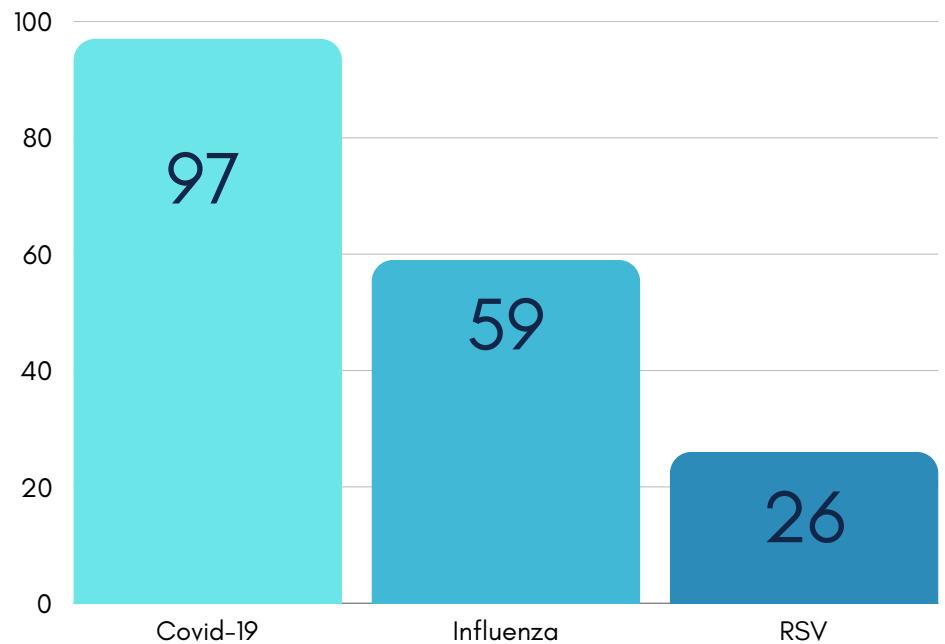
11

Non-COVID Outbreak Investigations

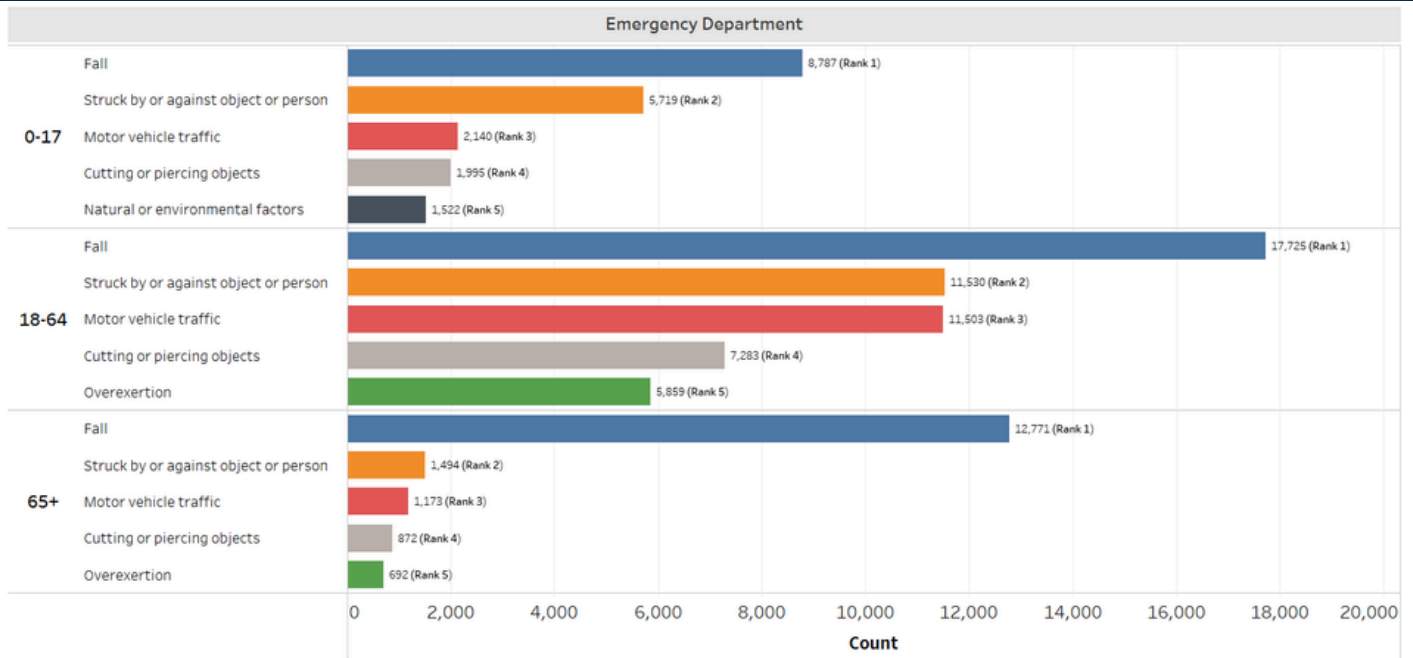
Top 5 Communicable Diseases with the Highest Incidence in 2024 (Excludes COVID)

Rank	Disease Group	Disease
1	Sexually Transmitted	Chlamydia Trachomatis Infection
2	Sexually Transmitted	Gonorrhea
3	Respiratory	Influenza-Associated Hospitalization
4	Other	Mycobacterial Disease (Non-Tuberculous)
5	Enteric/Gastrointestinal	E-Coli, Enteropathogenic (EPEC)

2024 Selected Respiratory Disease Hospitalizations by Count

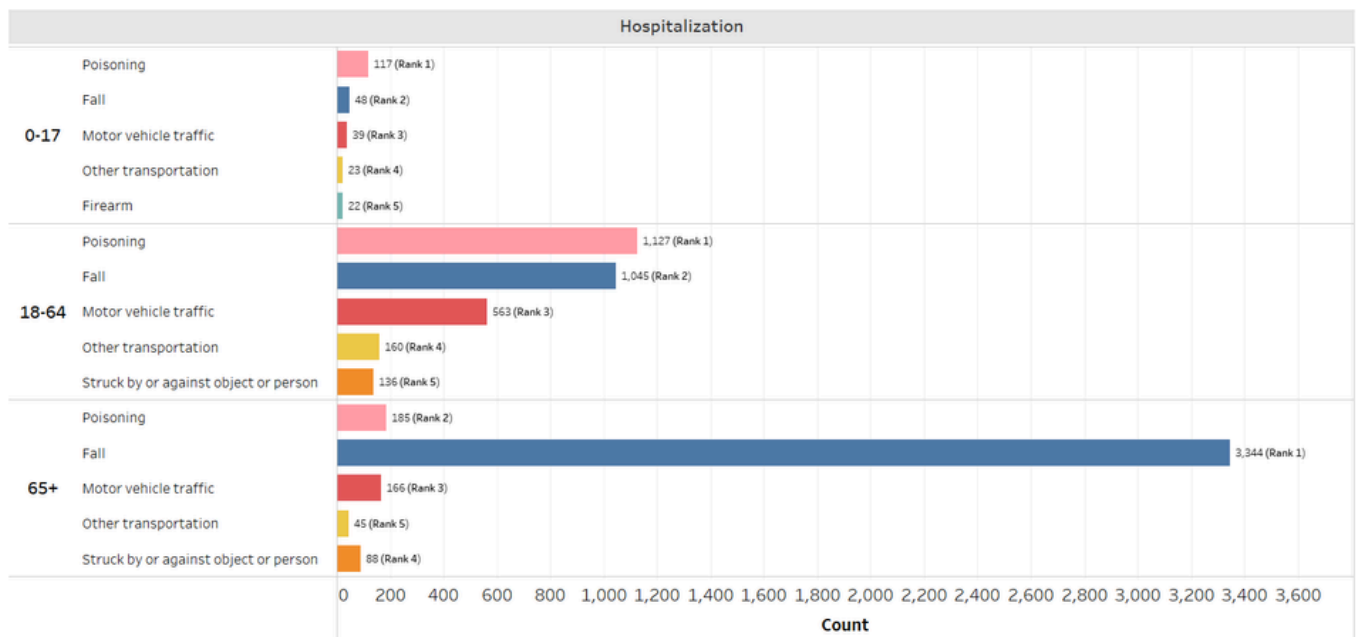


Ranked* Causes of Injury-Related Emergency Department and Hospitalization Visits Racine County 2016-2023



*Figure displays the top 5 causes of injury-related emergency department visits. Ranking is based on the total count of each cause over the timespan; 2016-2023. Highlights that can be extracted from the figure include changes in cause types, rank order, and magnitude of counts.

Source: Wisconsin Dept. of Health Services, Division of Public Health, Office of Health Informatics. Wisconsin Interactive Statistics on Health (WISH) data query system, <https://www.dhs.wisconsin.gov/wish/index.htm>. Injury-Related Emergency Department Module, accessed 2/4/2025.



*Figure displays the top 5 causes of injury-related hospitalization visits. Ranking is based on the total count of each cause over the timespan; 2016-2023. Highlights that can be extracted from the figure include changes in cause types, rank order, and magnitude of counts.

Source: Wisconsin Dept. of Health Services, Division of Public Health, Office of Health Informatics. Wisconsin Interactive Statistics on Health (WISH) data query system, <https://www.dhs.wisconsin.gov/wish/index.htm>. Injury-Related Hospitalization Visit Module, accessed 2/4/2025.

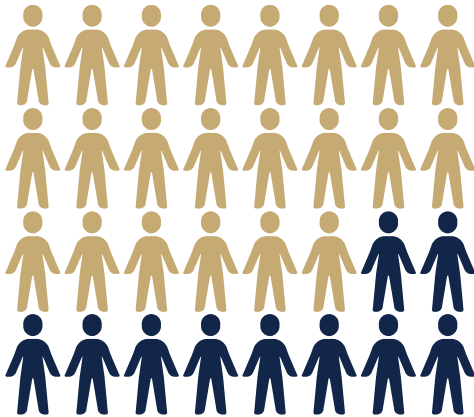




Outbreak Investigations

RCPH investigated 27 outbreaks in long term care facilities in 2024.

70% Acute Respiratory Infection
30% Gastrointestinal



Clinic Services

In 2024, the RCPH clinic provided:

- 154 pediatric vaccines to 47 pediatric clients (includes 13 influenza vaccines and 4 COVID-19 vaccines)
- 48 adult vaccines to 15 adult clients (includes 14 influenza vaccines and 12 COVID-19 vaccines)
- 18 TB skin tests



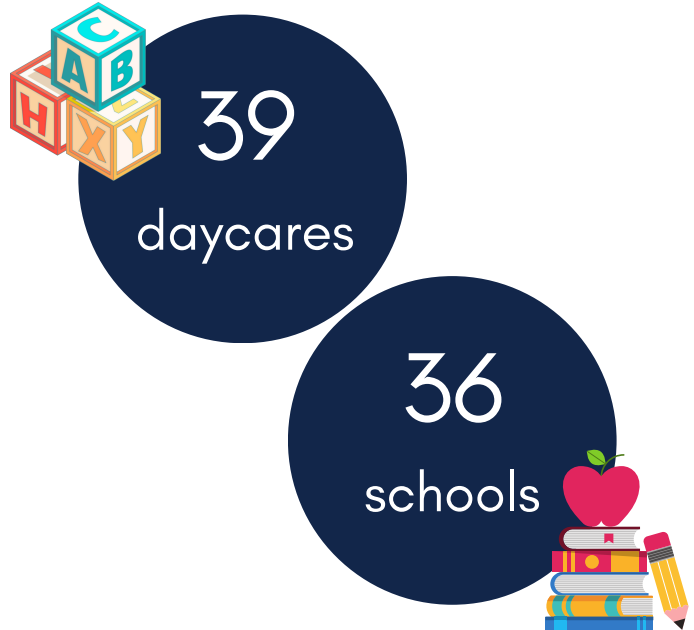
School and Daycare Immunization Compliance Program

RCPH conducts surveillance, analysis, and assurance of vaccine completion rates for licensed daycare centers and schools. In 2024, RCPH worked with 39 daycares and 36 schools to complete immunization reporting.



Population-Based Immunization Compliance Program

RCPH monitors population-based immunization rates routinely by generating letters to the parents of children approaching the age of two who may be behind on their immunizations.



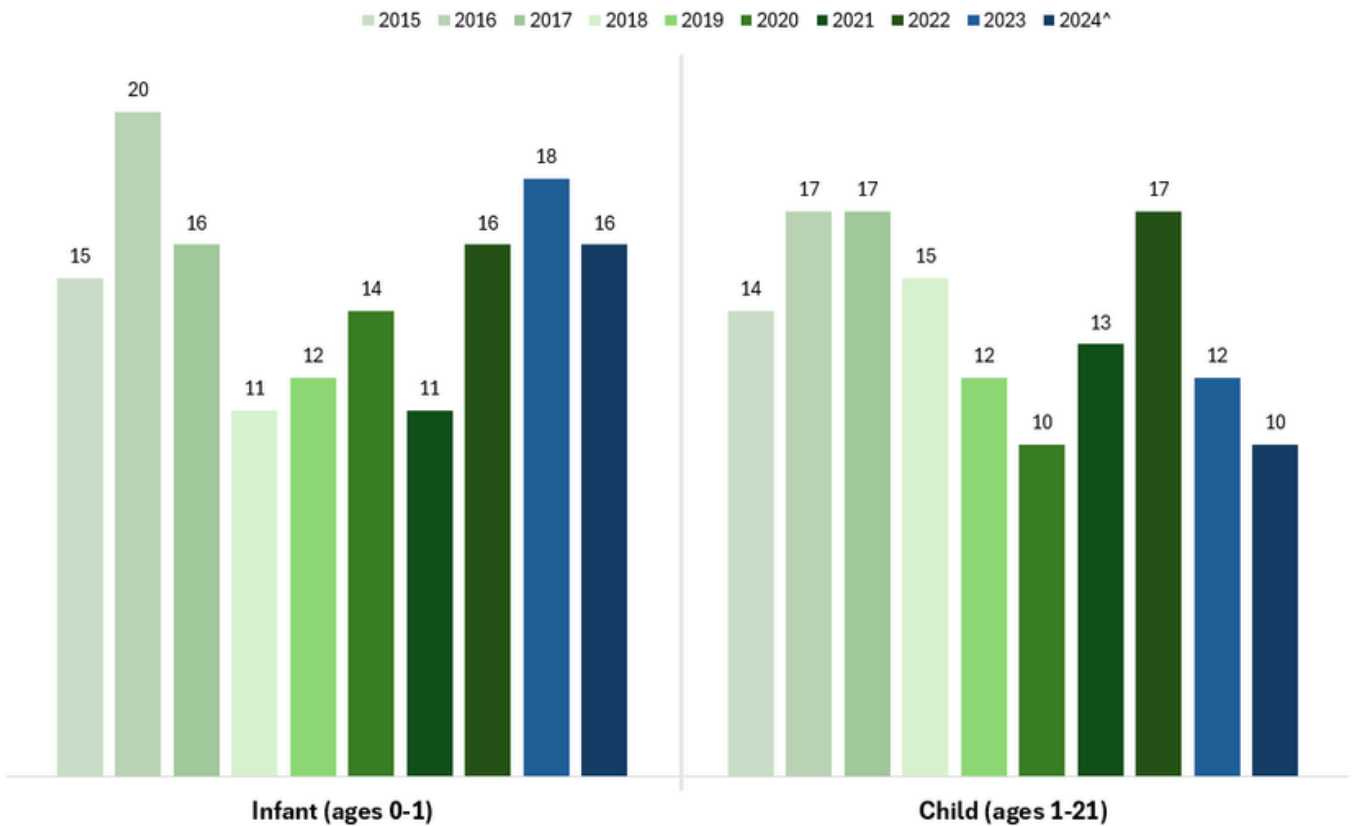


Fetal, Infant, & Child Death Review

The now hybrid FICDR team works to ensure accurate identification and uniform reporting of the cause, manner and relevant circumstances of every fetal, infant and child death. The goal is to identify preventable causes of death and inform program and policy direction in the community based on team findings and trend analyses. 37 cases were reviewed in 2024.

Racine County: Annual Number of Infant & Child Deaths

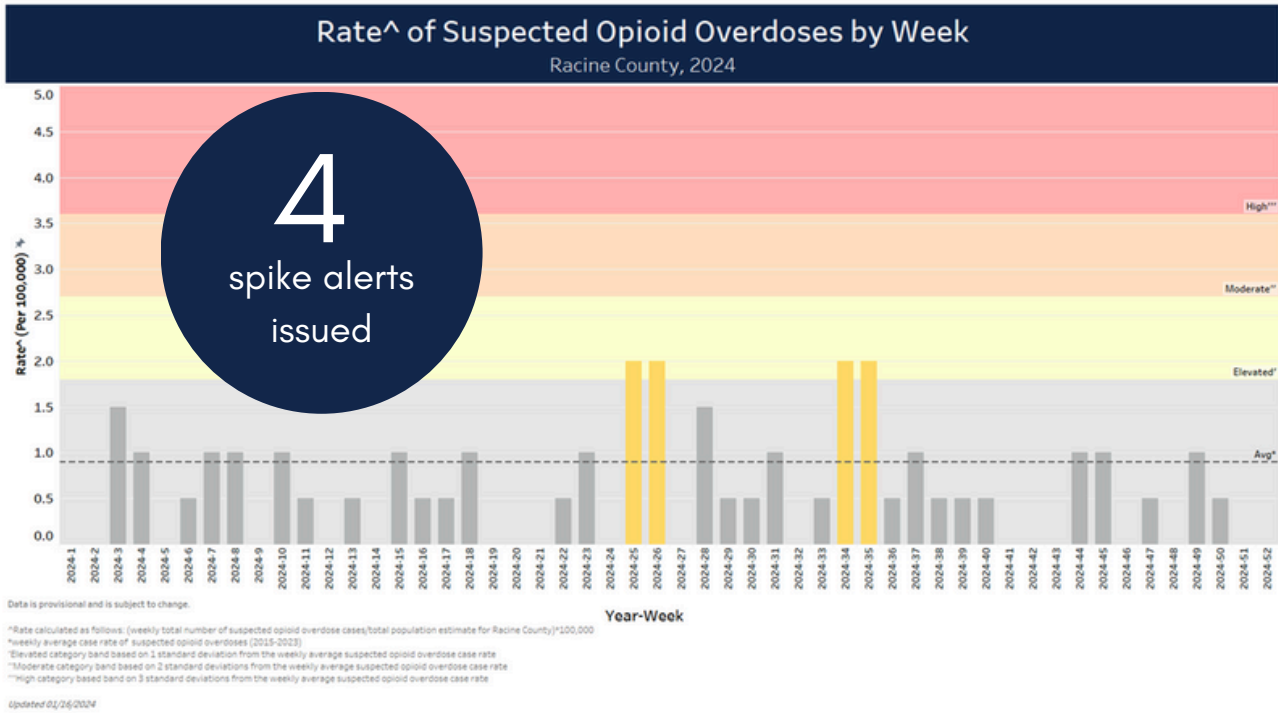
[^]Data may be incomplete





Overdose Fatality Review

In 2024, RCPH issued 4 spike alerts, an 80% decrease from 2023.



Harm Reduction Vending Machine

In 2024, RCPH installed a harm reduction vending machine at the public health office in Sturtevant. Between April - December, 1197 NARCAN and 1247 fentanyl test strip bundles were dispensed at the Sturtevant location.



1197



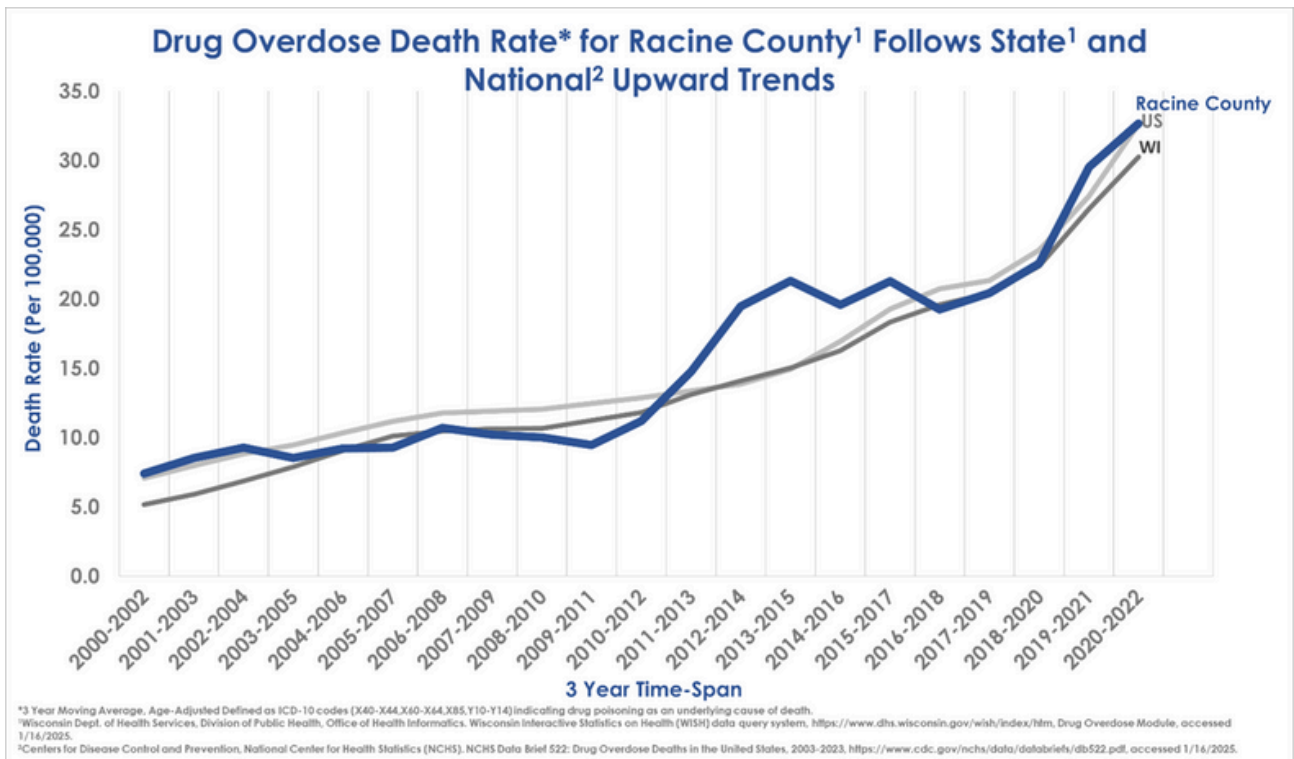
1247



Overdose Deaths* by Year

*Provisional, subject to change

Year	2017	2018	2019	2020	2021	2022	2023	2024
# of Overdose Deaths	25	27	43	54	56	46	72	42





Man Therapy

In 2024, RCPH continued to promote Man Therapy, a 24/7 online platform that uses humor and story telling to break down stigma around mental health care for working age men.

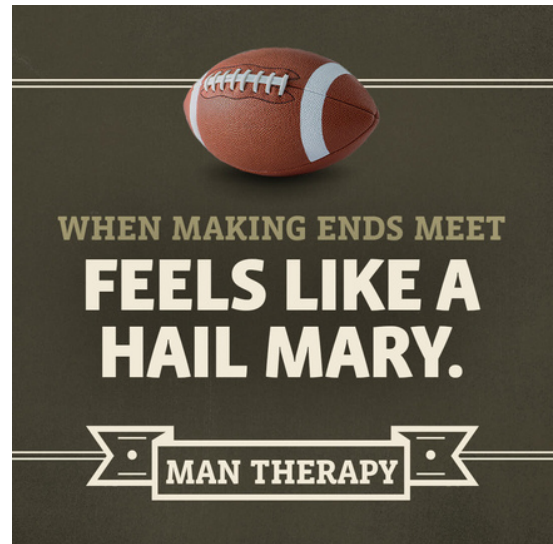
In Racine County in 2024:

- 2,377 unique users
- 270 completed head inspections
- 59 crisis button clicks



mantherapy.org

Therapy. The way a man does it.

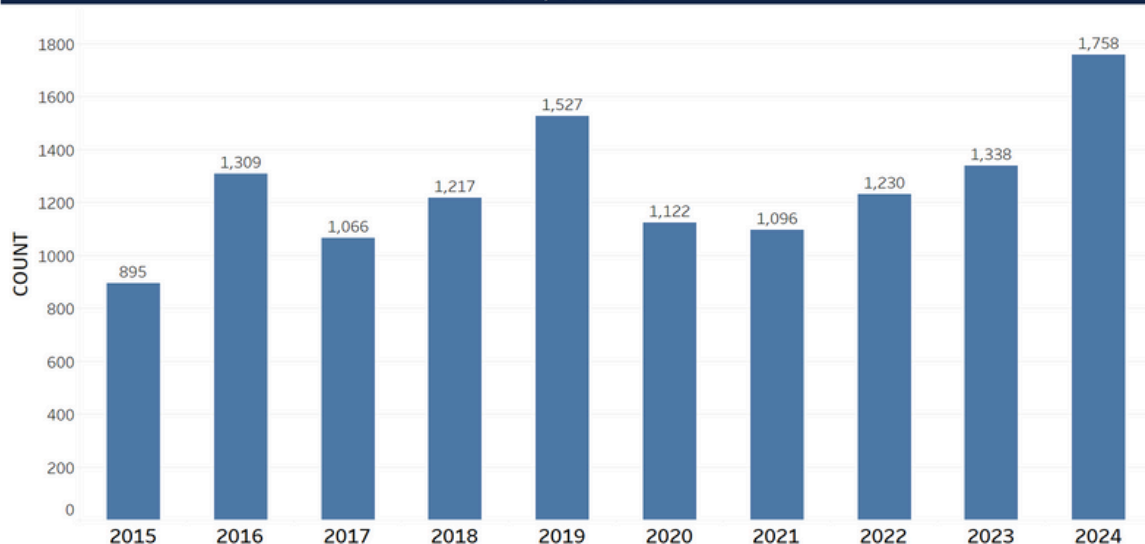


Lead Poisoning Case Management & Lead Hazard Assessments

Health department staff certified as Lead Hazard Investigators provide home assessments to determine potential source(s) of lead contamination and discuss possible solutions for remediation.



Number of Children Tested for Lead
RCPH, 2015-2024



Source(s): Racine County Public Health Division (RCPH), Healthy Homes and Lead Poisoning Surveillance System (HHLPSS)





Radon Testing

In 2023, RCPH sold 26 short term/2 long term radon test kits. Of the short term purchased, 73% were sent in for analysis with 37% of them having results greater than or equal to 4.0 pCi/l, the Environmental Protection Agency's recommended action level.



Human Health Hazards

"Human health hazard" means a substance, activity, or condition that is known to have the potential to cause acute or chronic illness, to endanger life, to generate or spread infectious diseases, or to otherwise injuriously affect the health of the public.





Environmental Health Licensing and Inspections

Environmental health staff provided licenses and inspections to the listed establishments.

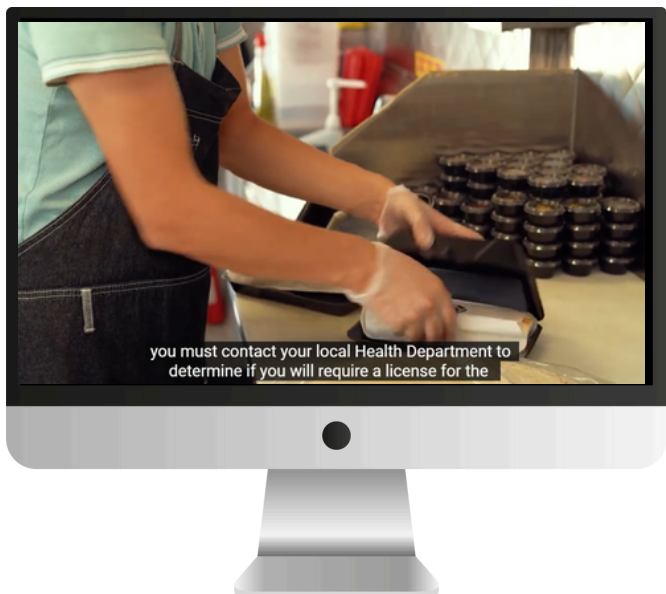
Additionally, RCPH continued to provide mutual aid to the City of Racine Public Health Department by completing 59 inspections.

Total Licenses	Establishment Type
19	Body Art
3	Campground
645	Retail Food
21	Hotels/Motels
62	Pools
1	Summer Camps
33	Tourist rooming Houses
784	TOTAL for 2023-2024



Food Safety Classes

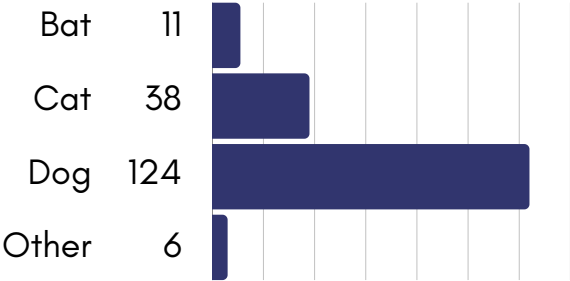
The RCPH Food Safety Training video was viewed 100 times in 2024. 43 certificates were sent to individuals who completed the training and quiz.





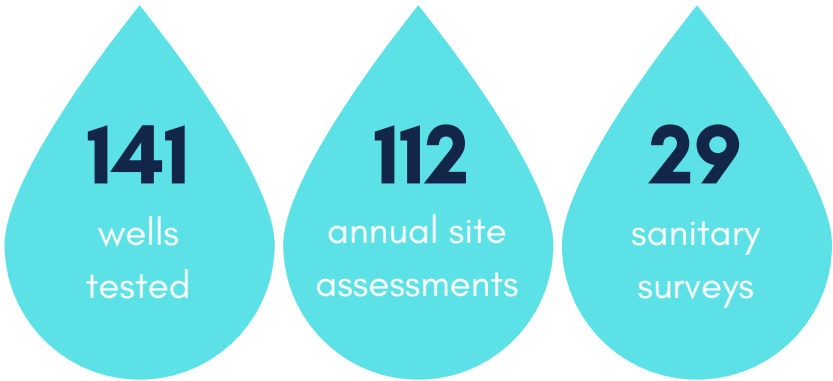
Rabies Exposure Investigations

RCPH continues to investigate potential rabies exposures to ensure the animal is not rabid and the victim has not been exposed to rabies. Each rabies exposure investigations requires a large amount of time to complete. In 2024, RCPH conducted 179 rabies exposure investigations.



DNR Well Water Program

In 2024, RCPH tested 141 wells, performed 112 annual site assessments, and completed 29 sanitary surveys.



Well Water Testing

In 2024, RCPH provided 27 bacteria/nitrate well water test kits to residents.



Beach Water Monitoring

Beaches monitored in the RCPH jurisdiction include Bohners Lake (Aukes, Leach and Public Beaches), Fischer Park Beach, North Bay Parkway Beach, Quarry Lake Park Beach, and Wind Point Lighthouse Beach.

RCPH posted 1 Caution sign throughout the 2024 beach season.





Hello Baby Universal Home Visiting

Hello Baby Racine County is a program that provides a nurse home visit for all parents of newborns in the community. In 2024, RCPH served 300 families through the Hello Baby program.



Partnerships with UW-Milwaukee and Walworth County Public Health

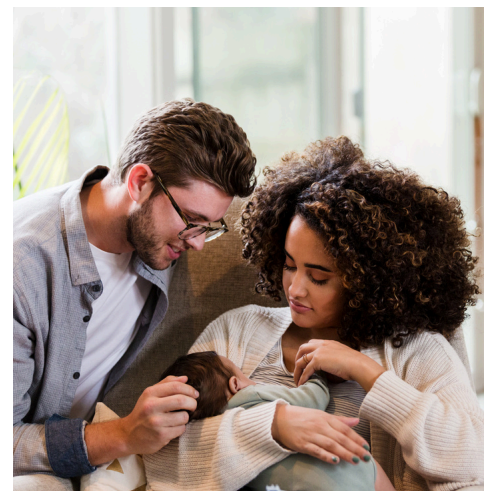
- developed new screening, referral, and nurse protocols
- trained nurses on the new protocol, interview techniques, and implementation
- continue to provide training and support as needed

Implementation in neighboring counties provides an opportunity for recruitment of residents who gave birth outside of Racine County.



Healthy Families America (HFA) Model Home Visiting Programs

In 2024, RCPH provided 1,315 home visits for 119 families. We had 10 families graduate from services this past year, which indicates those families have been actively participating in services for at least 3 years.



Emergency Preparedness



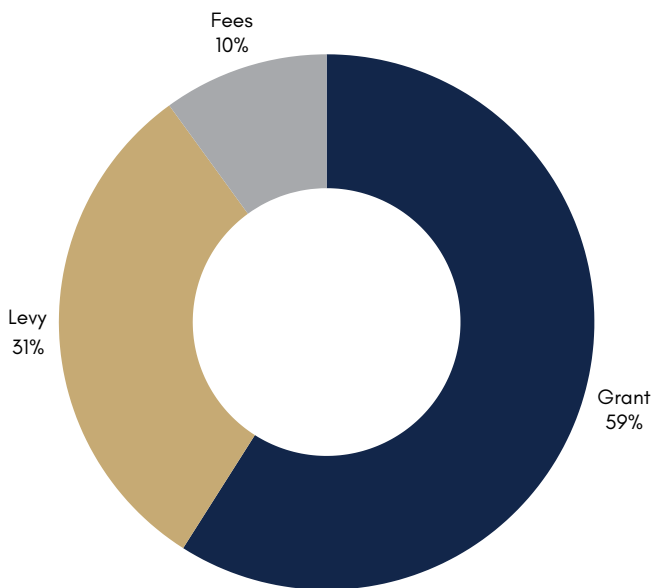
Emergency Preparedness

Emergency Preparedness facilitates organizational and community resilience in the face of a wide range of hazards. Health department staff, in cooperation with other county departments and partners, continue to develop emergency response plans and protocols, and identify internal and external resources that can be deployed by the Health Department during a public health or other emergency.

2024 Budget Summary

The levy contribution in 2024 amounted to \$10.68 per capita.

2024 Revenues



2024 Expenditures

